

OFFICE OF TAX AND REVENUE  
ASSESSMENT DIVISION



ASSESSMENT AND TAXATION PLAT

Square 1042

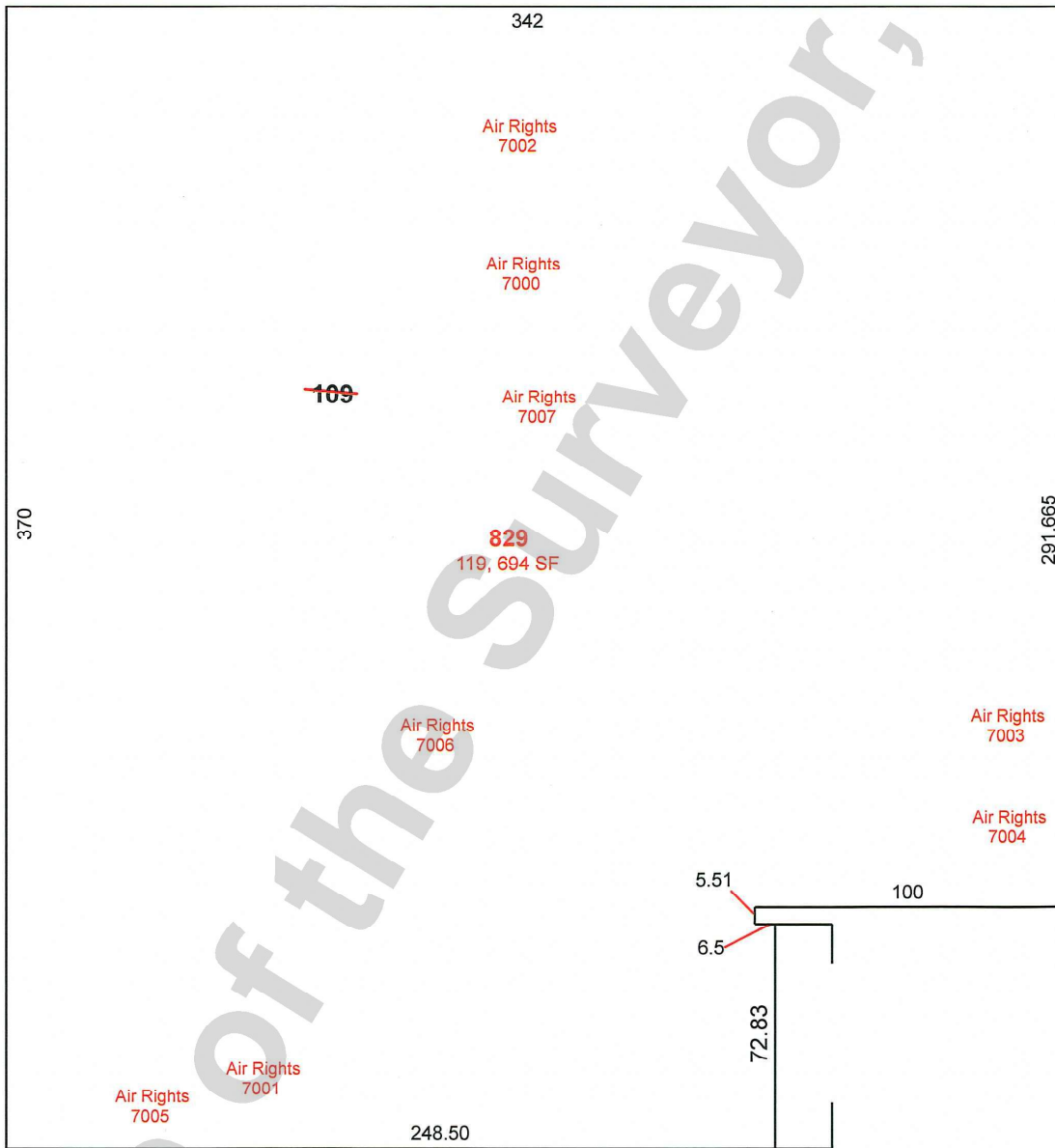
D STREET, S.E.

3871-P



16' PUBLIC ALLEY

14TH STREET, S.E.



E STREET, S.E.

Dana Smith A073381 4/12/2017 Scale, 1 inch 50 ft.  
 Draftsman Reference Date

The Office of Surveyor of the District of Columbia shall admit this plat to record under the provisions of Chapter 7 of Title 47, District of Columbia Code, Designation of Real Property for Assessment and Taxation, and for other purposes.

Chief Assessor, Office of Tax and Revenue

Board of Zoning Adjustment  
 District of Columbia  
 CASE NO.20705  
 EXHIBIT NO.4